

BEYOND LIMITS

T^{LINK}®

An advanced engineering thermoplastic adhesive
for ultimate performance and processability.

YARN/FILAMENTS

REINFORCEMENT FOR TEXTILE APPLICATIONS

Our novel T-Link® yarn and monofilaments are used as a method to introduce this resin to create a dry, drapable composite fabric that is ready for consolidation.

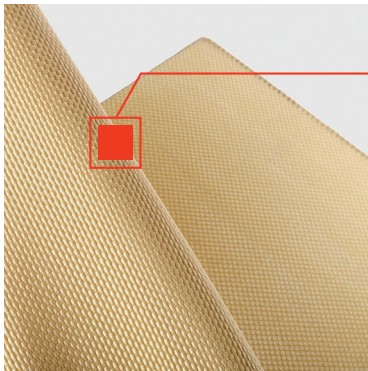
T-Link® yarn and monofilaments can effectively be co-woven or sewn into textile applications to make a dry thermoplastic composite with targeted and precise control of resin content.

Melt Index (g/min @ 190°C)

PRODUCT	GRADES	WHAT DOES IT ENABLE
COATED ARAMID YARN	3360 dTex aramid fiber is coated with T-Link® to 5250 dTex*	<ul style="list-style-type: none"> - Can be co-woven with reinforcement fibers - Creates a drapable fabric with a very consistent and precise resin content that is ready for consolidation

MONOFILAMENT	450, 850 or 2400 dTex*	<ul style="list-style-type: none"> - Can be used in weaving, stitching, knitting, and braiding
---------------------	------------------------	---------------------------------------------------------------------------------------------------------------

* Developmental Technology



KEY PRODUCT ATTRIBUTES

- Reduces the time and labor involved in applying a wet resin system and the subsequent curing of the thermoset resin
- Controls weight and resin content
- Ability to control the thickness of the laminate due to the co-woven feature
- Reduces the layup and process time
- No freezer required



Scan for disclaimer

llproducts.com/t-link